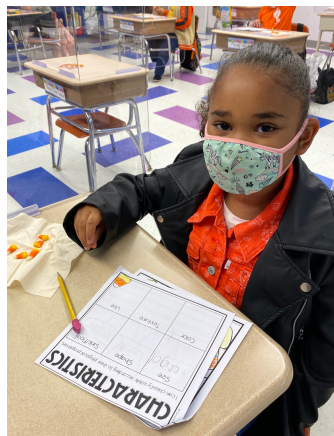


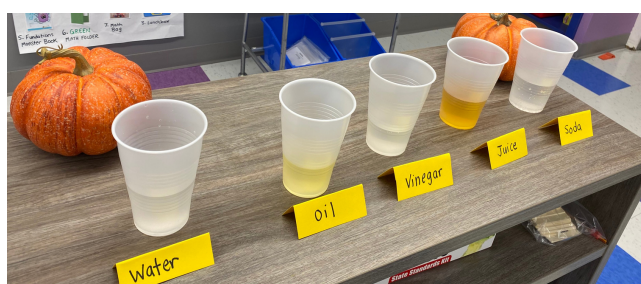
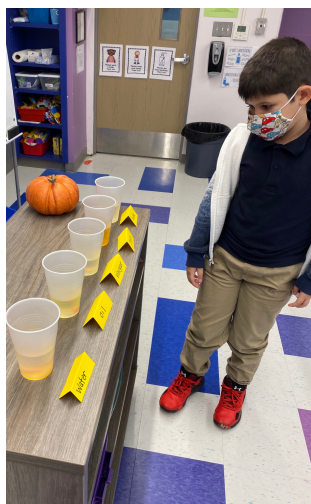
Welcome to the Woodland Park School District e-Newsletter, which is sent out weekly when school is in session. It serves as a glimpse of some of the wonderful things going on in our schools, as well as a point of reference for upcoming events.

Your Partner in Education,
Michele R. Pillari, Ed.D., Superintendent of Schools

Making Their Predictions



Second grade students in Ms. Hajbi's class at Charles Olbon School have been learning all about properties of matter. Each student identified the observable properties of candy corn (shape, size, color, texture). Then, they tested out several liquids to determine if they would dissolve the candy corn. Students made predictions and observed the results.



Important dates to note

Tuesday, Nov. 3
REMOTE LEARNING DAY
for ALL students as
school buildings are
closed for Election Day.

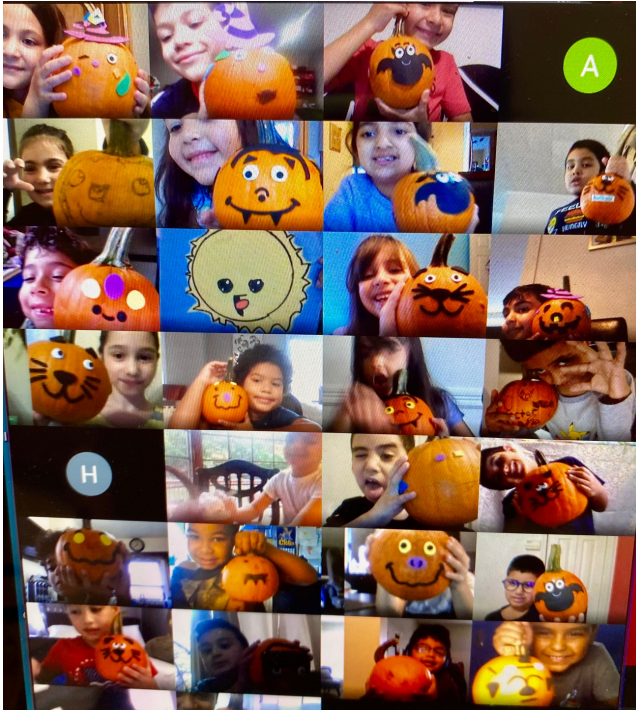
Thursday, Nov. 5 and
Friday, Nov. 6 - District
schools will be closed

Monday, Nov. 9, 7 p.m.
Board of Education
regular meeting at
Borough Hall.
Attendance is limited to
25, inclusive of the
board. Social distancing
and face masks are
mandatory. The meeting
will be televised on local
public access channels
and will be streamed live
on the District's
Facebook page

Thursday, Oct. 12, 7
p.m. - School 1 and
Charles Olbon School
Home & School
Associations
virtual meeting

Monday, Nov. 16, 7 p.m.
Beatrice Gilmore Home
& School Association
virtual meeting

Pumpkin Patch Tradition Continues



Ms. Gutierrez - first grade



Ms. Trovato - Pre-K

In keeping with the traditions of the annual Pumpkin Patch, the COHSA bought the students pumpkins. There was a Pumpkin Patch pick-up for virtual students and the in-person students had their pumpkins delivered to their classrooms. All students took part in a craft project to decorate their pumpkin.



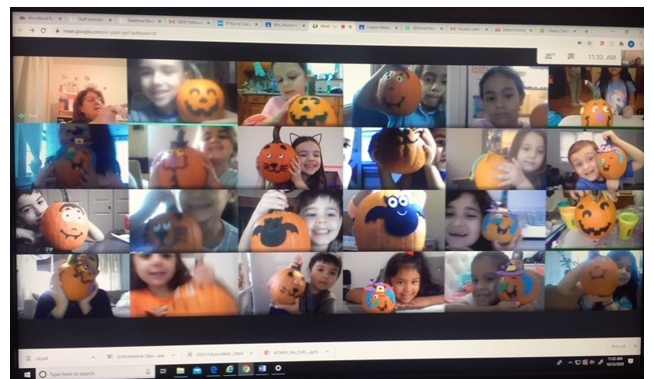
Ms. Odaman - kindergarten



Mrs. Cieslak - Pre-K



Mrs. Skrbic - second grade



Mrs. Munro - kindergarten

Making The Commitment



Prior to this week's Red Ribbon Week, sponsored in the district by the WP Municipal Alliance Against Alcoholism & Drug Abuse, members of our local Girl Scout troops decorated the grounds of the schools with red ribbons. Red Ribbon Week promotes a commitment to be a drug-free, alcohol-free, violence-free and smoke-free community.

Halloween Fun



Borough children from pre-K to fifth grade enjoyed the Recreation Department's annual Halloween parade last Saturday morning at Dowling Gardens. Children paraded around the park before prizes were awarded for best costumes. They also received a pumpkin and goodie bag from the Borough and the Municipal Alliance.

End Of Study Celebration

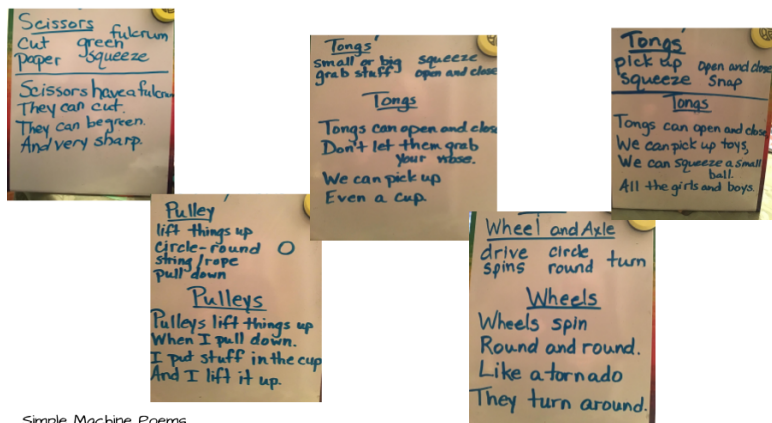


Show and Tell
Students show and tell
about the simple machines
they made or really enjoy
using



Making Fruit salad.

After completing a study of simple machines, Mrs. Murray's Pre-K 4 virtual class at School 1 had an end of study celebration. The students participated in Show and Tell, showing and telling about the simple machine they made or liked the best. They also wrote poems about simple machines and made fruit salad together, while learning to read a recipe and use a knife (wedge). Mrs. Murray is so proud of the awesome work her students did during this study.



Simple Machine Poems

New library service offers free live tutors, homework assistance

The Alfred Baumann Library announces the launch of **Brainfuse**, an on demand, anytime, anywhere eLearning program for all ages and levels. **HelpNow** offers personalized homework help in core subjects, SAT prep and live tutors. **Adult Learning Center** is also included in the HelpNow suite. Brainfuse is available to library patrons from computers at the library or from any home computer. There is no charge for this service. To find out more, click [here](#).

HelpNow provides learning solutions for students of all needs and backgrounds. Students communicate with live, online tutors using an interactive, virtual whiteboard to chat, write, draw, or copy/paste text or images. HelpNow also offers skills building and test preparation where after taking a quiz, the user can connect to a live tutor to review topics and questions covered. Live tutoring sessions are saved and can be replayed and shared. The Writing Lab and the Send Question Center options allow users to receive assistance any time of the day. Users can submit papers through the Writing Lab for feedback. The Send Question Center is for non-writing assignments.

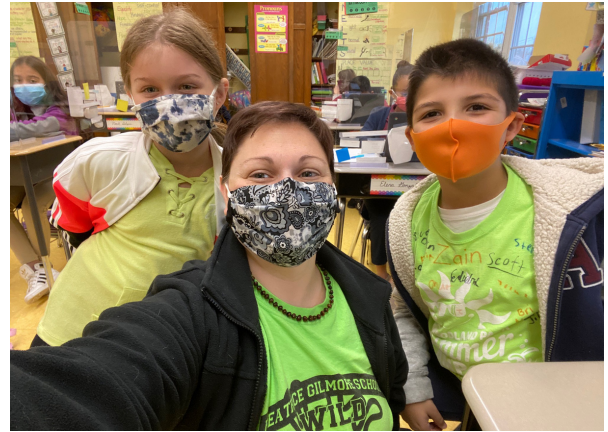
Adult Learning Center is the adult learners' version of HelpNow, where patrons can access GED prep, U.S citizenship test prep, resume assistance, Microsoft Office support, and career resources. Microsoft Office support allows patrons to ask questions about Excel, Word and PowerPoint. Writing Lab, Send Question Center and Skills Building are included.

Focus On Friendship

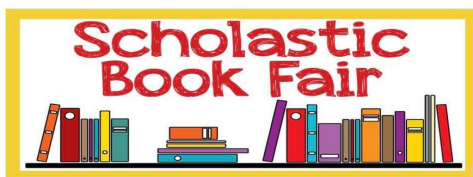


Students in Mrs. Casanovas' class at School 1 created a Friendship Quilt. During the beginning of the year, students focus a great deal on social emotional development. What does it mean to be a friend? How can I show someone they are special to me? This activity promotes teamwork and working together!

Too Bright For Drugs



Students in Mrs. Yesonosky's fourth grade class at Beatrice Gilmore School are "too bright to use drugs!"



Join us for our **FIRST School 1 Preschool BOOK FAIR**

When-Thursday, November 5

Time-10am-2pm and 3pm-8pm

**Where-Woodland Park American Legion
(410 Mount Pleasant Ave)**

***Families are WELCOMED to join their preschooler at the Book Fair (Masks must be worn)**

***Books from preschool to middle school level will be available for purchase**

The School 1 HSA will receive a portion of the Book Fair proceeds



CATCH-A-TREAT @ THE LIBRARY



This will be the final day for our Food Drive in partnership with Senator Kristin Corrado. Please consider bringing a non-perishable food item to help those in need.

